

THE
JAMAICA GAZETTE
SUPPLEMENT

PROCLAMATIONS, RULES AND REGULATIONS

1983

Vol. CXLVIII

FRIDAY, SEPTEMBER 19, 2025

No. 342

No. 406

THE FOREST ACT

THE FOREST (CAMELOT VILLAGE, ST. ANN FOREST MANAGEMENT AREA)
(DECLARATION) ORDER, 2025

In exercise of the power conferred upon the Minister by section 7(1)(a) of the Forest Act, and of every other power hereunto enabling, the following Order is hereby made:—

1. This Order may be cited as the Forest (Camelot Village, St. Ann Forest Management Area) (Declaration) Order, 2025.

2. The areas described in Part I of the Schedule, and delineated on the maps set out in Part II thereof, is declared a forest management area and shall be known as the Camelot Village, St. Ann Forest Management Area.

SCHEDULE

(Paragraph 2)

PART—I

Camelot Village, St. Ann Forest Management Area

The Camelot Village, St. Ann Forest Management Area is described as follows—

Lot Number 1

All that parcel of Crown Land situated in Camelot Village in the parish of St. Ann, containing by survey 7.7776 hectares and registered at Volume 1589 Folio 52 in the name of the Commissioner of Lands and recorded at Land Valuation Number 01505013499, butting and bounded as follows—

Northerly — on Lot 631 registered at Volume 1549 Folio 742 with Land Valuation Number 01505013332, Lot 630 registered at Volume 1549 Folio 741 with Land Valuation Number 01505013331, Lot 629 registered at Volume 1549 Folio 740 with Land Valuation Number 01505013330, Lot 628 registered at Volume 1549 Folio 739 with Land Valuation Number 01505013329, Lot 627 registered at Volume 1549 Folio 738 with Land Valuation Number 01505013328, Lot 626 registered at Volume 1549 Folio 737 with Land Valuation Number 01505013327, Lot 625 registered at Volume 1549 Folio 736 with Land Valuation Number 01505013326, Lot 624 registered at Volume 1549 Folio 735 with Land Valuation Number 01505013325, Lot 623 registered at Volume 1549 Folio 734 with Land Valuation Number 01505013324, Lot 622 registered at Volume 1549 Folio 733 with Land Valuation Number 01505013323, Lot 621 registered at Volume 1549 Folio 732 with Land Valuation Number 01505013322, Lot 620 registered at Volume 1549 Folio 731 with Land Valuation Number 01505013321, Lot 619 registered at Volume 1549 Folio 730 with Land Valuation Number 01505013320, Lot 618 registered at Volume 1549 Folio 729 with Land Valuation Number 01505013319, Lot 617 registered at Volume 1549 Folio 728 with Land Valuation Number 01505013318, Lot 616 registered at Volume 1549 Folio 727 with Land Valuation Number 01505013317,

Easterly — on Lot 615 registered at Volume 1549 Folio 726 with Land Valuation Number 01505013316, Lot 600 registered at Volume 1579 Folio 224 with Land Valuation Number 01505028182, Lot 599 registered at Volume 1579 Folio 223 with Land Valuation Number 01505028181, Lot 598 registered at Volume 1579 Folio 222 with Land Valuation

SCHEDULE, *contd.*

Number 01505028180, Lot 597 registered at Volume 1579 Folio 221 with Land Valuation Number 01505028179, Lot 596 registered at Volume 1579 Folio 220 with Land Valuation Number 01505028178, Lot 521 registered at Volume 1579 Folio 145 with Land Valuation Number 01505028103, Lot 520 registered at Volume 1579 Folio 143 with Land Valuation Number 01505028102, Lot 519 registered at Volume 1579 Folio 144 with Land Valuation Number 01505028101, Lot 518 registered at Volume 1579 Folio 370 with Land Valuation Number 01505028100, Lot 517 registered at Volume 1579 Folio 369 with Land Valuation Number 01505028099, Lot 516 registered at Volume 1579 Folio 368 with Land Valuation Number 01505028098, Lot 515 registered at Volume 1579 Folio 367 with Land Valuation Number 01505028097, Lot 514 registered at Volume 1579 Folio 366 with Land Valuation Number 01505028096, Lot 513 registered at Volume 1579 Folio 365 with Land Valuation Number 01505028095, Lot 512 registered at Volume 1579 Folio 364 with Land Valuation Number 01505028094, Lot 511 registered at Volume 1579 Folio 363 with Land Valuation Number 01505028093, Lot 510 registered at Volume 1579 Folio 362 with Land Valuation Number 01505028092, Lot 509 registered at Volume 1579 Folio 361 with Land Valuation Number 01505028091, Lot 508 registered at Volume 1579 Folio 360 with Land Valuation Number 01505028090, Lot 507 registered at Volume 1579 Folio 359 with Land Valuation Number 01505028089, Lot 506 registered at Volume 1579 Folio 358 with Land Valuation Number 01505028088, Lot 505 registered at Volume 1579 Folio 357 with Land Valuation Number 01505028087, Lot 504 registered at Volume 1579 Folio 356 with Land Valuation Number 01505028086, Lot 503 registered at Volume 1579 Folio 355 with Land Valuation Number 01505028085, Lot 502 registered at Volume 1579 Folio 354 with Land Valuation Number 01505028084, Lot 501 registered at Volume 1579 Folio 353 with Land Valuation Number 01505028083, Lot 500 registered at Volume 1579 Folio 352 with Land Valuation Number 01505028082, Lot 499 registered at Volume 1579 Folio 351 with Land Valuation Number 01505028081, Lot 498 registered at Volume 1579 Folio 350 with Land Valuation Number 01505028080, Lot 497 registered at Volume 1579 Folio 349 with Land

SCHEDULE, *contd.*

Valuation Number 01505028079, Lot 496 registered at Volume 1579 Folio 348 with Land Valuation Number 01505028078, Lot 495 registered at Volume 1579 Folio 347 with Land Valuation Number 01505028077, Lot 494 registered at Volume 1579 Folio 346 with Land Valuation Number 01505028076, Lot 493 registered at Volume 1579 Folio 345 with Land Valuation Number 01505028075, Lot 492 registered at Volume 1579 Folio 344 with Land Valuation Number 01505028074, Lot 491 registered at Volume 1579 Folio 343 with Land Valuation Number 01505028073, Lot 490 registered at Volume 1579 Folio 342 with Land Valuation Number 01505028072,

Southerly — on lands registered at Volume 1156 Folio 223 with Land Valuation Number 01505013040,

Westerly — on Lot U3.3 registered at Volume 1535 Folio 611 with Land Valuation Number 01505013496, Lot P05 registered at Volume 1535 Folio 611 with Land Valuation Number 01505013496, and on concrete drain,

or however otherwise the same land may be butted, bounded, known distinguished, or otherwise described.

Lot Number 2

All that parcel of Crown Land situated in Camelot Village in the parish of St. Ann, containing by survey 8.1699 hectares and registered at Volume 1589 Folio 53 in the name of the Commissioner of Lands and recorded at Land Valuation Number 01505013500, butting and bounded as follows—

Northerly — on Lot U5 Section B,

Easterly — on Lot 107 registered at Volume 1418 Folio 924 with Land Valuation Number 01506007001, Lot 101 registered at Volume 1419 Folio 892 with Land Valuation Number 01506007003,

Southerly — on lands registered at Volume 1535 Folio 611 with Land Valuation Number 01505013496, Lot 451 registered at Volume 1579 Folio 303, with Land Valuation Number 01505028033,

Westerly — on Lot 450 registered at Volume 1579 Folio 302 with Land Valuation Number 01505028032, Lot 449 registered at Volume 1579 Folio 301 with Land Valuation Number 01505028031, Lot 448 registered at Volume 1579 Folio

SCHEDULE, *contd.*

300 with Land Valuation Number 01505028030, Lot 447 registered at Volume 1579 Folio 299 with Land Valuation Number 01505028029, Lot 446 registered at Volume 1579 Folio 298 with Land Valuation Number 01505028028, Lot 445 registered at Volume 1579 Folio 297 with Land Valuation Number 01505028027, Lot 444 registered at Volume 1579 Folio 296 with Land Valuation Number 01505028026, Lot 443 registered at Volume 1579 Folio 295 with Land Valuation Number 01505028025, Lot 442 registered at Volume 1579 Folio 294 with Land Valuation Number 01505028024, Lot 441 registered at Volume 1579 Folio 293 with Land Valuation Number 01505028023, Lot 440 registered at Volume 1579 Folio 292 with Land Valuation Number 01505028022, Lot 439 registered at Volume 1579 Folio 291 with Land Valuation Number 01505028021, Lot 438 registered at Volume 1579 Folio 290 with Land Valuation Number 01505028020, Lot 437 registered at Volume 1579 Folio 289 with Land Valuation Number 01505028019, Lot 436 registered at Volume 1579 Folio 288 with Land Valuation Number 01505028018, Lot 435 registered at Volume 1579 Folio 287 with Land Valuation Number 01505028017, Lot 434 registered at Volume 1579 Folio 286 with Land Valuation Number 01505028016, Lot 433 registered at Volume 1579 Folio 285 with Land Valuation Number 01505028015, Lot 432 registered at Volume 1579 Folio 284 with Land Valuation Number 01505028014, Lot 431 registered at Volume 1579 Folio 283 with Land Valuation Number 01505028013, Lot 430 registered at Volume 1579 Folio 282 with Land Valuation Number 01505028012, Lot 429 registered at Volume 1579 Folio 281 with Land Valuation Number 01505028011, Lot 428 registered at Volume 1579 Folio 280 with Land Valuation Number 01505028010, Lot 427 registered at Volume 1579 Folio 279 with Land Valuation Number 01505028009, Lot 426 registered at Volume 1579 Folio 278 with Land Valuation Number 01505028008, Lot 425 registered at Volume 1579 Folio 277 with Land Valuation Number 01505028007, Lot 424 registered at Volume 1579 Folio 276 with Land Valuation Number 01505028006, Lot 423 registered at Volume 1579 Folio 275 with Land Valuation Number 01505028005, Lot 422 registered at Volume 1579 Folio 274 with Land Valuation Number 01505028004, Lot 421 registered at Volume 1579

SCHEDULE, *contd.*

Folio 273 with Land Valuation Number 01505028003, Lot 420 registered at Volume 1579 Folio 272 with Land Valuation Number 01505028002, Lot 418 registered at Volume 1549 Folio 721 with Land Valuation Number 01505013311, and on Lot 417 registered at Volume 1549 Folio 720 with Land Valuation Number 01505013310,

or however or otherwise the same land may be butted, bounded, known, distinguished, or otherwise described.

Lot Number 3

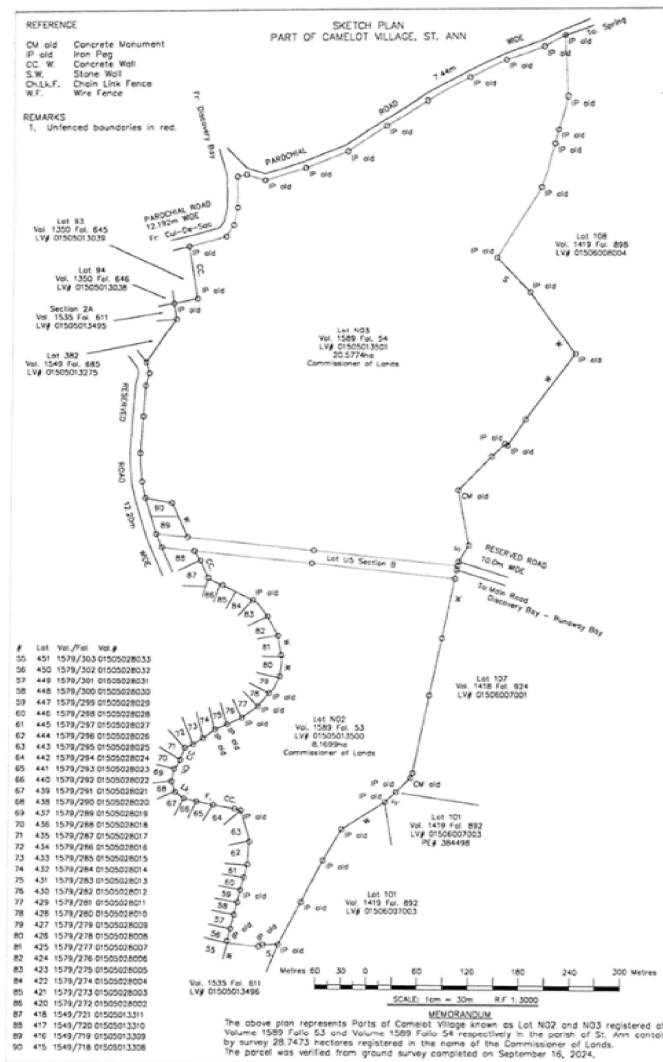
All that parcel of Crown Land situated in Camelot Village in the parish of St. Ann, containing by survey 20.5774 hectares and registered at Volume 1589 Folio 54 in the name of The Commissioner of Lands and recorded at Land Valuation Number 01505013501, butting and bounded as follows:

- Northerly — on Parochial Road from Discovery Bay to Spring,
- Easterly — on Lot 108 registered at Volume 1419 Folio 898 with Land Valuation Number 01506008004,
- Southerly — on Lot U5 Section B,
- Westerly — on Lot 416 registered at Volume 1549 Folio 719 with Land Valuation Number 01505013309, Lot 415 registered at Volume 1549 Folio 718 with Land Valuation Number 01505013308, on Reserved Road, on Lot 382 registered at Volume 1549 Folio 685 with Land Valuation Number 01505013275, Section 2A registered at Volume 1535 Folio 611 with Land Valuation Number 01505013495, Lot 94 registered at Volume 1350 Folio 646 with Land Valuation Number 01505013038, Lot 93 registered at Volume 1350 Folio 645 with Land Valuation Number 01505013039, and on Parochial Road from the cul-de-sac to Discovery Bay,

or however or otherwise the same land may be butted, bounded, known, distinguished, or otherwise described.

SCHEDULE, *contd.*

Lot Numbers 2 and 3



Dated this 25th day of August, 2025.

ANDREW HOLNESS
Prime Minister and Minister of Economic
Growth and Job Creation.