



FOREST NEWS



ISSUE 12 | VOL. 4 | DECEMBER 2018 PARTNERS' EDITION

**GROUND TRUTHING
EXERCISE ONGOING
FOR THE BOUNDARY
OF THE AREA TO BE
PROTECTED AS THE
COCKPIT COUNTRY**

Pg. 3

FOREST TREK II 2018

Pg. 8

**HOW TO SPRUCE UP
YOUR CHRISTMAS
DECOR WITH PINE
CONES**

Pg. 11





Editor's Note

'Tis the season to be jolly...' We have come to the end of another calendar year and we are so happy that you have made it to the end with us.

We use this opportunity to let you know that we value you and how you have supported us throughout the year. We also crave your continued support as we work to sustainably manage Jamaica's forest resources for the benefit of current and future generations.

From our family to yours, we wish you a very Merry Christmas and all the very best for 2019!

Forest News Committee

IN THIS ISSUE

- 03** Ground truthing exercise ongoing for the boundary of the area to be protected as Cockpit Country
- 04** Make Every Tree Count- Forestry Department
- 07** 3 reasons to get a real Christmas tree
- 08** Forest Trek II 2018
- 11** Industry News
- 12** 5 ways to spruce up your Christmas decor with pine cones



GROUND TRUTHING EXERCISE ONGOING FOR THE BOUNDARY OF THE AREA TO BE PROTECTED AS THE COCKPIT COUNTRY

The Forestry Department hosted four (4) sensitization sessions to update residents in and around the Cockpit Country on the ground truthing exercise being conducted by the Agency.

The ground truthing is part of activities mandated by the Most Honourable Prime Minister Andrew Holness to finalize the area to be protected as the Cockpit Country.

QUICK FACTS ABOUT THE COCKPIT COUNTRY

- *The land cover of the area to be protected as the Cockpit Country represents 51% of the remaining primary or Closed Broadleaf forest in Jamaica*
- *It is home to over 1,500 species of plants and animals, some of which are endemic to the area*
- *The proposed area to be protected will cover just under 76,000 hectares, spanning 5 parishes*
- *The majority of it is already protected as Forest Reserves*
- *The Cockpit Country supplies Jamaica with approximately 40% of its fresh water and the area to be protected supplies eight (8) rivers*

The sessions were conducted in Clarks Town, Trelawny; Albert Town, Trelawny; Mocho, St. James; and Siloah, St. Elizabeth.

According to Senior Director, Forest Science and Technology Services Division, Ms. Donna Lowe, the Agency received a map of the proposed boundary from the Most Honourable Prime Minister which is being used to carry out the ground truthing exercise.

"Ground truthing is just the term used to describe the process of identifying and marking on the ground what we have received on paper. The activity is progressing well and we're projecting that it will be finished within two years," Ms. Lowe said.



Ms. Donna Lowe explaining to attendees at the Albert Town meeting what the ground truthing process is all about.

Work is currently being conducted on the Eastern side of the proposed boundary and the ground truthing process has been completed for approximately 77.99 km of the proposed boundary. Following the completion, the Forestry Department will submit the data and boundary shape file to the Most Honourable Prime Minister for him to decide on the next steps.



MAKE EVERY TREE COUNT- FORESTRY DEPARTMENT

CEO & Conservator of Forests, Ms. Marilyn Headley (left) assists Member of Parliament for East Rural St. Andrew, Mrs. Juliet Holness to plant a Neem seedling at the Donald Quarrie High School on National Tree Planting Day 2018.

CEO & Conservator of Forests, Ms. Marilyn Headley, has called on Jamaicans to start playing their role in planting trees that will count towards a sustainable future for the country.

Speaking at the national ceremony and project to mark the 16th observance of National Tree Planting Day at the Donald Quarrie High School, Ms. Headley said that one way to do so is to mitigate against the impacts of climate change which is said to be humanity's greatest threat in thousands of years.

In her address, Ms. Headley said that trees and by extension forests are important tools in the fight to stave off the effects of climate change, noting that they absorb and store the key greenhouse gases emitted by our vehicles and power plants.

“While all living plant matter absorbs CO₂ as part of the photosynthesis process, trees process significantly more than smaller plants due to their large size and extensive root structures. Additionally, they have much more woody biomass to store carbon than smaller plants. As a result, trees and forests are considered nature’s most efficient carbon sinks which makes planting trees a form of climate change mitigation”, she said.

She says that as the experts and front-runners in tree planting, the Forestry Department is leading the drive to plant trees as well as maintain and increase forest cover in Jamaica.

She noted that while the agency reforest at least 100 hectares of denuded and degraded hillsides annually and continue to reap successes under its various programmes, such as the Private Forestry Programme, the country continue to lose forest and tree cover to development activities such as road and hotel construction and mining.

“To compensate for the trees and forest cover we have lost, we must engage in a process of continuous replanting to maintain the present level of national forest cover at 40 percent. It is no easy feat to achieve this goal which is why we have an annual call to action for every Jamaican to play his or her part by planting trees,” Ms. Headley noted.

She used the opportunity to applaud all the individuals and organizations that continue to support National Tree Planting Day and have been contributing to a sustainable future for our country through tree planting activities.

National Tree Planting Day 2018 was observed on Friday, October 5, under the theme, ‘Every Tree Count: 1, 2, 3 ...Plant Yours Today’.





Christmas Trees *for* SALE

**Add a natural flair to your home
this Christmas!**

*Buy your Christmas tree
grown in the hills of the
Blue Mountain Forest Reserve
from the Forestry Department*

*Height ranges from 4ft-12 ft
at \$800 per foot*

*We accept cash, debit and credit cards
Trees cut based on order*

**Order by calling 876-618-3205
exts. 2043, 2111 or 2066**

3 REASONS TO GET A REAL CHRISTMAS TREE

If you're into Christmas décor, you know nothing says Christmas better than a good old Christmas tree! The battle is usually between the size of the tree and most importantly, whether it's real or artificial. You may be asking yourself, why should I get a natural Christmas tree but the real question is, why shouldn't you? Here are three reasons why you should most definitely get a real Christmas tree.

Smells like Christmas

1

Christmas is not just about the decorations and carols, it's also about the aromas from the fruit cake soaked with white rum, the perfectly fermented cup of sorrel, the gungo peas cooking down in the natural coconut milk, the smell of freshly made eggnog with a tups of cinnamon and of course the smell of freshly cut Christmas tree. You cannot buy this natural fresh pine scent in any supermarket; you can only get it from a real Christmas tree.

Doesn't require storage

2

When the last ornament is packed away and all the twinkling lights are taken down, do you have the space to store a Christmas tree? Probably not! That is something that you wouldn't need to worry about if you have a real Christmas tree. You can recycle your tree to use as mulch in your garden. The mulch decomposes to produce important nutrients for plants.

Perfect for recycling/Environmentally friendly

3

Above all, getting a real Christmas tree is the more environmentally-friendly choice. By comparison, artificial trees usually cannot be recycled because of the PVC and additional harmful materials in them plus they will never deteriorate thus sitting in landfills for hundreds of years. Real Christmas trees also reduce our carbon footprint. It's estimated that an artificial tree has a carbon footprint more than twice that of a real tree – an artificial tree would have to be reused for at least 10 Christmases to keep its environmental impact lower than that of an actual tree.

To further reduce your carbon footprint, you can consider getting a potted Christmas tree. Every Christmas, you will have your natural tree to decorate without having to acquire one that has been cut.

Now, go get your natural Christmas tree and happy decorating!

FOREST TREK II

Forest Trek II 2018 has officially gotten a 5 star rating. The 10 KM hike took participants through the Bogue 2 Forest Reserve in St. Ann where they got a chance to learn about and experience the natural and historical heritage of the area.

The Forest Reserve which sits above the world famous Dunn's River Falls has three rivers running through the property which includes the Dunn's river which cascades down the over 600 feet falls. The Forest Reserve which was once a slave plantation has remains of the slave church and school. Along with the tour guides who provided information, the trail had a number of signage which provided Trekkers with additional information on trees and other features such as the National Water Commission catchment area.

The Trek ended at the old caretaker's house where Trekkers enjoyed lunch and some even took a dip in the nearby river.

Special thanks to the all the sponsors who helped to make the day a success: Jamaica Observer, 876 Water, Chukka Caribbean Adventures, Island Routes, Mystic Mountains, Lucozade, Rainforest Seafoods and Vape.

Here is some of the feedback received from the trekkers below. Also, see photographic highlight on pages 10 and 11.

THE TRAIL WAS WELL MARKED, THE GUIDES WERE RESPONSIVE AND THE DISTANCE ACCURATE.



My group thoroughly enjoyed and looks forward to 2019!



On behalf of Team JFMills, I would like to thank you for the well-organized trek held at the Bogue Estate on Saturday, November 17, 2018.



The bar has now been set very high and we expect no less from you at the upcoming treks.



I had a great time. Best one since I started a few years ago. Looking forward to 2019

Forest Trek II to the Bogue Forest Reserve was for me a totally cool and refreshing way to spend a Saturday morning. I totally enjoyed this trek, the scenery, the varying water features and the flora seen throughout the trek. I was refreshed, revived and totally rejuvenated and would do it again in a heartbeat. Thanks to the Forestry Department for putting on this trek and allowing us an insight into another beautiful part of this Land of wood and water. Amazing!!









Industry News

INNOVATIONS IN FOREST MONITORING LIE AT THE FOREFRONT OF THE CLIMATE CHANGE BATTLE

Source: www.un-redd.org

Amid growing urgency to step up action on climate change, the participants of the 24th Conference of the Parties (COP24) to the United Nations Framework Convention on Climate Change are discussing what is needed to reach the Paris Agreement's long-term goal to keep the increase in global average temperatures to well below 2°C above pre-industrial levels. Tropical forests are undervalued assets in tackling two of the most significant challenges of our time – climate change and sustainable development. Reducing emissions from deforestation and forest degradation (REDD+) is a key nature-based solution to climate change, while also triggering many non-carbon benefits arising from REDD+ policies and actions, which include poverty reduction, enhancing biodiversity, improving forest governance and protecting other vital environmental services.

Drivers of deforestation are numerous, and innovative technologies and increased capacity are making a positive difference in tracking land use and forest cover change across the globe. With 10 years of experience in effective technical support, capacity building and policy advice on REDD+, the collaborative UN-REDD Programme is a pioneer in innovative approaches. Building on the technical expertise of the Food and Agriculture Organization of the United Nations (FAO), the United Nations Development Programme (UNDP) and the United Nations Environment Programme, the UN-REDD Programme has been supporting REDD+ countries in

investing in and applying innovative forestry monitoring tools in order to effectively plan, implement and measure the contribution of forests to climate and ecosystem services. This particular topic was discussed at the UN System Side Event on SDG15 titled, "Forests first - from 10 years REDD+ to the full scope of nature-based climate solutions", which was organized by the UN-REDD Programme on December 12 at COP24 in Katowice, Poland.

Focused on innovations and experiences, the COP24 side event discussed perspectives on the evolution of partnerships for transformative innovations in policy reform, forest monitoring and reporting tools, as well as innovative financial mechanisms for forest conservation and restoration.

Comprised of experts representing the UN-REDD Programme partner countries, donors and agencies, as well as private sector partners, the panel also discussed the importance of forest data for planning, implementation and reporting on REDD+ activities.

"Various stakeholders involved in REDD+ processes, be it government, civil society, private sector players or local communities, need accurate and timely information to manage the world's forests. It is one of the most important pillars that will support countries in combating deforestation – and eventually reaching the Sustainable Development and Paris Agreement Goals." - Tiina Vahanen, Coordinator of the REDD+/NFM cluster at FAO's Forestry Department.

Read more at <https://bit.ly/2EgDcb0>

5 WAYS TO SPRUCE UP CHRISTMAS DECOR WITH Pine Cones

Decorating with pine cones is an easy and affordable way to spruce up any décor especially during the Christmas season! They can be used as centerpieces, ornaments, candle holders and can also be used to make garlands, wreath and even miniature Christmas trees.

However, aside from their decorative purposes, pine cones do play an important role in nature. The pine cones sold by the Forestry Department are from the Caribbean Pine (*Pinus caribaea*) tree. This type of cone is the typical fruiting product of *Pinus* species in general. Their function is to protect the developing seeds until they are mature and the seasonal conditions are right for their release. During ripening, the cone gradually turns from green to brown and the scales eventually open to allow the winged seeds to be dispersed by the wind. The empty pine cones then fall from the trees, and can be collected to be used in creative ways. Here are five easy ways to spruce up your décor this Christmas with pine cones.

Make a wreath

Wreaths have been used as a decorative sign of Christmas for hundreds and hundreds of years. Christmas wreaths can adorn any part of your home, inside or out. Imagine how beautiful a pine cone wreath would look hanging on your door, wall or window! Here's a link to how you can make your pine cone wreath; it's a good activity for family bonding.
<https://www.remodelaholic.com/make-easy-diy-pinecone-wreath-one-hour/>

Interesting Centerpieces

Centerpieces can help transform a simple décor into a true masterpiece. This Christmas, compliment your floral and candle arrangements with pine cones or if you dare to go the extra mile, make your centerpieces entirely of pine cones.

Miniature Christmas trees

Have you ever thought of miniature pine cone Christmas trees? They make great table top displays and they are pretty easy to make. Decorate the pine cones like you would a Christmas tree then get a pot to hold the decorated pine cones and you have your miniature pine cone Christmas trees.

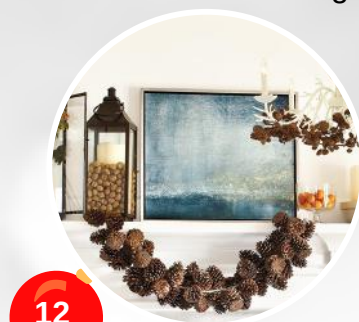
Ornaments

Another great way to incorporate pine cones in your Christmas décor is to use them as ornaments on your Christmas tree. You can add some colour, glitter, bows and other accessories to make your pine cones pop. This is another great activity for the entire family.

Garland

Christmas garlands add holiday flair to stairways, doorways and much more. Imagine how much flair a pine cone garland would add! Check out the following link to learn how to make your pine cone garland:

<https://www.ballarddesigns.com/howtodecorate/2012/10/how-to-make-a-pinecone-garland/>



Mission

Manage our forests in an effective and responsible manner for the benefit of current and future generations.

Vision

Jamaica: a country where we value our forest ecosystem and use its resources in a responsible manner.

Core Values

Commitment Confidentiality
Teamwork Integrity Professionalism

Forestry Department
173 Constant Spring Road
Kingston 8

Phone: 876-924-2667-8

Fax: 876-924-2626

E-mail: fdinfo@forestry.gov.jm

www.forestry.gov.jm

Find us on:

